

## **TW100-S4W1CA** **4- Port Broadband DSL/Cable Modem Internet Router**

TRENDnet's TW100-S4W1CA DSL/Cable Broadband Router with 4-Port Switch provides the easiest and securest way to share your high-speed cable/xDSL Internet connection. It has a built-in 4-Port 10/100Mbps switch that provides direct connection to workstations or uplinks to other Hubs or Switches. By sharing just one TW100-S4W1CA, one IP address, one ISP account and one cable/xDSL modem, up to 253 network users can surf the Internet at the same time. The TW100-S4W1CA also has Network Address Translation (NAT) feature, which acts like a firewall and protects your computers from hackers. TRENDnet's DSL/Cable Modem Internet Router is a feature-rich product that provides cost savings and easy configuration.

(Version E)



*Web Cruiser™*

### FEATURES

- Windows Setup Wizard automatically configures the Router according to your Internet connection
- Easy configuration via web browser or the Windows-based software tool
- Supports 253 users to access Internet at the same time
- Auto-sense 10/100Mbps connection speed and Half/Full Duplex mode on all ports
- All ports support Auto-MDIX, easy connection to Broadband modem and computers
- 80Mbps WAN-to-LAN throughput
- Supports Cable Modem/xDSL Modem with Dynamic IP, Static IP, PPPoE, and PPTP
- DHCP server allocates up to 253 client IP addresses
- 32 "Static DHCP" entries for your network devices
- Network Address Translation (NAT), which acts like a natural firewall that keeps hackers out
- Supports Proxy DNS and Dynamic DNS (DDNS)
- Static Routing to neighborhood Router and Intranet servers
- 4 DMZ Host entries, 24 Virtual Server (Port Forwarding) entries, and 24 Packet Filter entries
- Up to 10,240 Internet sessions
- Supports most operating systems such as Windows 95/98/NT/2000/XP, Linux and Mac OS
- Supports Internet applications such as AOE, eDonkey/eMule, E-Mail, FTP, FlashGet, Gaming, ICQ, mIRC, MSN Messenger, NetMeeting, PCAnywhere, PING, Telnet, and more
- VPN (PPTP and IPSec) traffic pass-through
- Upgradeable firmware
- Save configuration to PC file
- Reset button for setting the unit back to factory default state
- 5-year warranty

### BENEFITS

- **Easy Integration:**  
With the built-in 4-port 10/100Mbps Switch, you can integrate this device to any Ethernet/Fast Ethernet Network.
- **Cost-Effectiveness:**  
Saves router costs and on-line charges.
- **Security:**  
Added firewall protection keeps hackers out.
- **Performance:**  
Up to 80Mbps throughput between Internet (WAN) and local area network (LAN).



# TW100-S4W1CA

## 4- Port Broadband DSL/Cable Modem Internet Router

### SPECIFICATIONS

#### Standards:

- IEEE 802.3 10Base-T Ethernet, IEEE 802.3u 100Base-TX Fast Ethernet

#### Protocols:

- IP, NAT, ARP, ICMP, DHCP client/server, PPPOE, PPP, PAP, CHAP, NTP, HTTP, TFTP, POP3, PPTP, IPSec

#### Management:

- Web Browser configuration and Windows-based software tool

#### Local Network Port:

- 4 x auto-sensing and auto-MDIX 10/100Mbps ports

#### Internet Port:

- 1 x auto-sensing and auto-MDIX 10/100Mbps connection for External Cable/xDSL Broadband modem

#### Cabling:

- Ethernet: Cat. 3, 4, 5, UTP/STP EIA/ITA-568 100 Ohms, 100meters max.
- Fast Ethernet: Cat. 5, UTP/STP EIA/TIA-568 100 Ohms, 100meters max.

#### LEDs:

- Power, Status, WAN, LAN (L1 ~ L4)

#### Power Consumption:

- 9V DC, 700mA. 6.3Watts max.

#### Dimensions:

- 136 x 100 x 40 mm (5.35 x 3.94 x 1.57 inches)

#### Weight:

- 170 g. (6.0 oz.)

#### Temperature:

- Operating: 0° ~ 50° C (32° ~ 122° F)
- Storage: -20° ~ 60° C (-4° ~ 140° F)

#### Humidity:

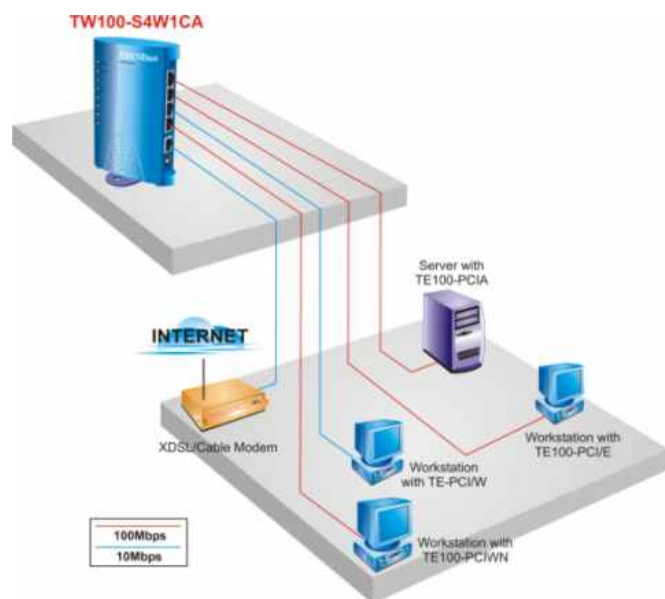
- 0% ~ 90% non-condensing

#### Certifications:

- CE, FCC, and VCCI



### NETWORKING SOLUTIONS



**To Order Please Call:**  
**1-888-326-6061**

### PRODUCT INFORMATION

➤ **TW100-S4W1CA:** 4-Port Broadband DSL/Cable Modem Internet Router

➤ **TW100-W2plus:** 2 WAN Port 10/100Mbps Fast Ethernet Internet Station

### ORDERING INFORMATION



**TRENDware International, Inc.**

3135 Kashiwa Street  
Torrance, CA. 90505. USA

Tel: 310-891-1100

Fax: 310-891-1111

Web: [www.trendnet.com](http://www.trendnet.com)

Email: [sales@trendware.com](mailto:sales@trendware.com)